



GMT MONTHLY MEMBERSHIP PROGRESS REPORT

Results as of: 11/30/2023

Multiple District 8

LOCATION: LOUISIANA

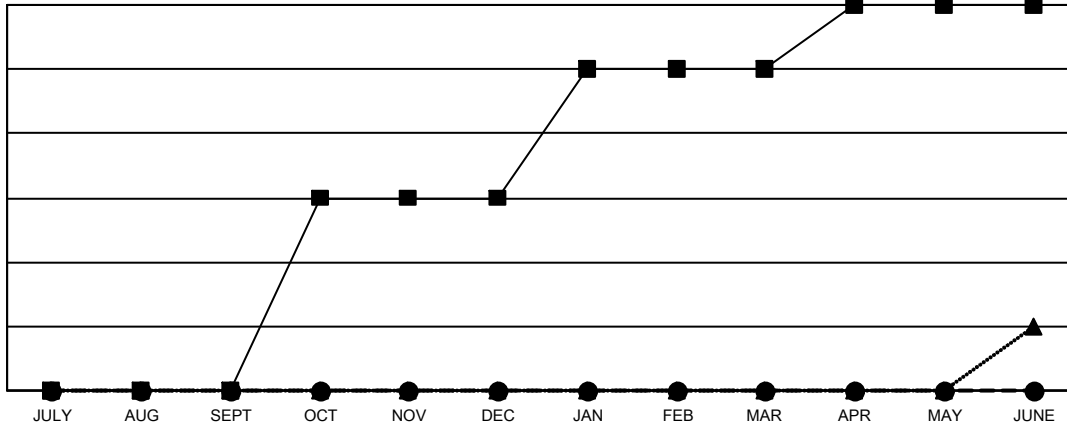
GMT: OPEN

GMT CA 1

Clubs			
RESULTS FOR 2023-2024			
QUARTER	NEW CLUB GOAL	NEW CLUBS	DROPPED CLUBS
JULY/AUG/SEPT	0	0	1
OCT/NOV/DEC	3	0	1
JAN/FEB/MAR	2	0	0
APR/MAY/JUNE	1	0	0

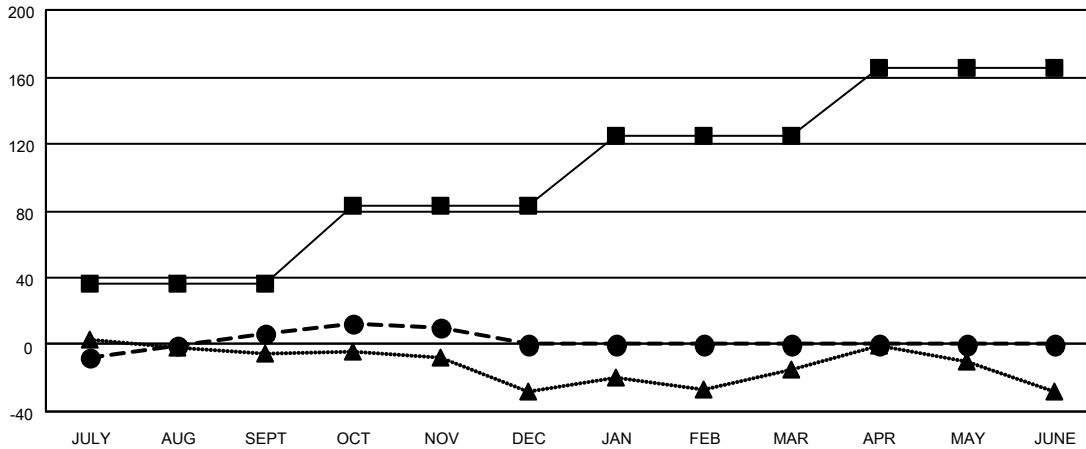
Members			
RESULTS FOR 2023-2024			
QUARTER	MEMBER GROWTH NET GOAL	MEMBER GROWTH ACTUAL	DROPPED MEMBERS ACTUAL (including transfers)
JULY/AUG/SEPT	36	122	104
OCT/NOV/DEC	47	77	67
JAN/FEB/MAR	42	0	0
APR/MAY/JUNE	40	0	0

GOALS AND ACTUAL NEW CLUBS CUMULATIVE



- - CURRENT YEAR GOALS FOR NEW CLUBS
- - CURRENT YEAR ACTUAL NEW CLUBS
- ▲ - LAST YEAR ACTUAL NEW CLUBS

GOALS AND ACTUAL MEMBERS CUMULATIVE



- - MEMBER GROWTH NET GOAL
- - MEMBER GROWTH ACTUAL
- ▲ - LAST YEAR MEMBERSHIP ACTUAL

DROPPED CLUBS: 2	56 CLUBS OF 130 ADDED 1 OR MORE NEW MEMBERS	GENDER DISTRIBUTION
		MALE 2,217 (64.00%)
		FEMALE 1,247 (36.00%)
DROPPED MEMBERS	CLICK HERE FOR CUMULATIVE MEMBERSHIP DATA	TOTAL FAMILY UNIT MEMBERS 614
DECEASED 26		FAMILY MEMBERS PAYING HALF DUES 318
CLUB CANCELLED 10		
OTHER 135		
TOTAL 171		